

Hy-Lok ZCO O-Ring Face Seal Fittings

Catalog No. H-260CF
Jan. 2006



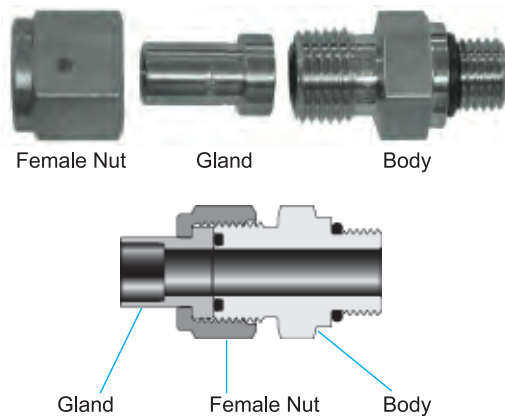
MATERIAL

Bodies Glands and Nuts - 316 stainless steel
Automatic Tube Weld Fittings - 316L stainless steel
O-RING - 70 durometer fluorocarbon (Viton) is standard on ZCO bodies. 90 durometer fluorocarbon is used with SAE/MS threads. Other materials are available upon request with temperature range belows are;

| Material | Temperature Rating | Designator |
|----------------------|--------------------|------------|
| Fluorocarbon | 400°F (200°C) | |
| Buna N | 250°F (120°C) | BU |
| PTFE | 450°F (230°C) | PE |
| Perfluoroelastomer | 550°F (280°C) | KA |
| Ethylene - propylene | 300°F (140°C) | EP |

TYPICAL ASSEMBLY

ZCO assemblies are made up of three basic components



FEATURES

- Zero Clearance
- Vacuum to High Pressure
- Wide Temperature Range Up to 550°F
- Easy Installation and Maintenance
- Safety Leak Test Ports

TECHNICAL DATA

Pressure Ratings

Pressure ratings published in this catalog are calculated in accordance with Power Piping Code ANSI B31.1

Testing

ZCO assemblies have been consistently helium leak tested to a rate of 4×10^{-9} std cm³ / s, without leakage.

Dimensions

For reference only, subject to change.

O-ring Uniform Size Number

Use chart below to find O-ring Uniform size number of components listed in this catalog.

| ZCO Component Size | O-ring Uniform Size Number |
|--------------------|----------------------------|
| ZCO - 4 | 010 |
| ZCO - 8 | 111 |
| ZCO - 12 | 116 |
| ZCO - 16 | 215 |

COMPONENTS LOCATION

| | |
|--------------------------|----------------|
| Nuts | page 2 |
| Glands | page 2,3 |
| Bodies | page 3,4,5,6,7 |
| Swivel Bodies | page 7,8 |
| Installation Instruction | page 8 |
| Ordering Information | page 8 |



HY-LOK CORPORATION

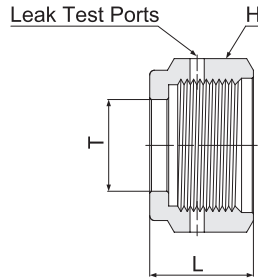
©2002, 2006 HY-LOK CORPORATION All rights reserved

Hy-Lok ZCO O-Ring Face Seal Fittings

NUTS

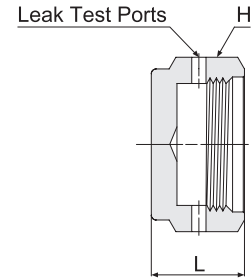
Female Nut

Connects a ZCO gland and body.



Blind Nut

Seals a ZCO body.

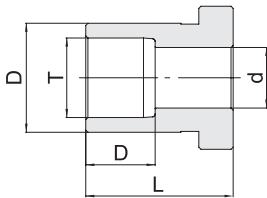


| Part Number | ZCO Size in. | L | T | H Hex Flat |
|--------------|--------------|--------------|--------------|------------|
| | | in. (mm) | | |
| H-ZCOFN - 4 | 1/4 | 0.66 (16.76) | 0.40 (10.16) | 11/16" |
| H-ZCOFN - 8 | 1/2 | 0.69 (17.53) | 0.61 (15.49) | 1" |
| H-ZCOFN - 12 | 3/4 | 0.81 (20.57) | 0.94 (23.88) | 1-1/2" |
| H-ZCOFN - 16 | 1 | 0.81 (20.57) | 1.25 (31.75) | 1-3/4" |

| Part Number | ZCO Size in. | L | H Hex Flat |
|--------------|--------------|--------------|------------|
| | | in. (mm) | |
| H-ZCOBN - 4 | 1/4 | 0.44 (11.18) | 11/16" |
| H-ZCOBN - 8 | 1/2 | 0.56 (14.22) | 1" |
| H-ZCOBN - 12 | 3/4 | 0.75 (19.05) | 1-1/2" |
| H-ZCOBN - 16 | 1 | 0.81 (20.57) | 1-3/4" |

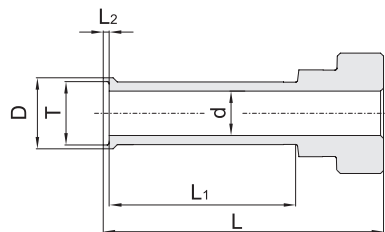
GLANDS Adapt tubing to ZCO O-ring face seal.

Socket Weld Gland



| Part Number | ZCO Size in. | T Tube O.D. | D | d | L | L ₂ | Working Pressure | |
|---------------|--------------|-------------|--------------|--------------|--------------|----------------|------------------|------|
| | | | in. (mm) | | | | psig | bar |
| H-ZCOSWG - 2 | 1/8 | 1/8" | 0.38 (9.65) | 0.09 (2.29) | 0.77 (19.56) | 0.10 (2.54) | 15400 | 1060 |
| H-ZCOSWG - 4 | 1/4 | 1/4" | 0.38 (9.65) | 0.18 (4.57) | 0.77 (19.56) | 0.28 (7.11) | 6800 | 460 |
| H-ZCOSWG - 6 | 1/2 | 3/8" | 0.60 (15.24) | 0.28 (7.11) | 0.81 (20.57) | 0.31 (7.87) | 8100 | 560 |
| H-ZCOSWG - 8 | 1/2 | 1/2" | 0.60 (15.24) | 0.40 (10.16) | 0.81 (20.57) | 0.38 (9.65) | 3000 | 200 |
| H-ZCOSWG - 12 | 3/4 | 3/4" | 0.92 (23.37) | 0.62 (15.75) | 0.94 (23.88) | 0.44 (11.17) | 3700 | 250 |
| H-ZCOSWG - 16 | 1 | 1" | 1.19 (30.23) | 0.87 (22.10) | 0.98 (24.90) | 0.62 (15.75) | 3000 | 200 |

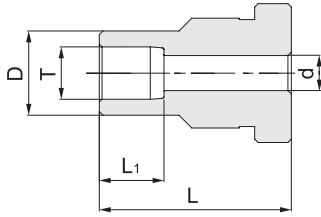
Automatic Tube Weld Gland



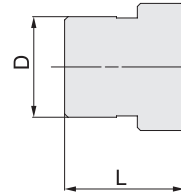
| Part Number | ZCO Size in. | T Tube O.D. | D | d | L | L ₁ | L ₂ | Nominal Wall Thickness | Working Pressure | |
|--------------|--------------|-------------|--------------|--------------|--------------|----------------|----------------|------------------------|------------------|-----|
| | | | in. (mm) | | | | | | psig | bar |
| H-ZCOTWG- 4A | 1/4 | 1/4" | 0.29 (7.37) | 0.18 (4.57) | 1.12 (28.45) | 0.75 (19.05) | 0.02 (0.51) | 0.035" | 5100 | 350 |
| H-ZCOTWG- 6A | 1/2 | 3/8" | 0.41 (10.41) | 0.31 (7.87) | 1.13 (28.70) | 0.75 (19.05) | 0.03 (0.76) | 0.035" | 3300 | 220 |
| H-ZCOTWG- 8A | 1/2 | 1/2" | 0.55 (13.97) | 0.40 (10.16) | 1.14 (28.96) | 0.75 (19.05) | 0.04 (1.02) | 0.049" | 3500 | 240 |
| H-ZCOTWG-12A | 3/4 | 3/4" | 0.80 (20.32) | 0.65 (16.51) | 1.20 (30.48) | 0.75 (19.05) | 0.04 (1.02) | 0.049" | 2100 | 150 |
| H-ZCOTWG-16A | 1 | 1" | 1.06 (26.92) | 0.87 (22.10) | 1.41 (35.81) | 0.96 (24.38) | 0.04 (1.02) | 0.065" | 2100 | 150 |

Hy-Lok ZCO O-Ring Face Seal Fittings

Socket weld Reducing Gland



Blind Gland



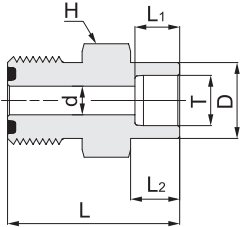
| Part Number | ZCO Size in. | T Tube O.D. | D | d | L | L ₁ | Working Pressure | |
|--------------|--------------|-------------|--------------|-------------|--------------|----------------|------------------|-----|
| | | | in. (mm) | | | | psig | bar |
| H-ZCOSWRG4-2 | 1/4 | 1/8" | 0.29 (7.37) | 0.09 (2.29) | 0.77 (19.56) | 0.10 (2.54) | 12600 | 860 |
| H-ZCOSWRG8-4 | 1/2 | 1/4" | 0.48 (12.19) | 0.18 (4.57) | 0.81 (20.57) | 0.28 (7.11) | 10700 | 730 |

| Part Number | ZCO Size in. | D | L |
|-------------|--------------|--------------|--------------|
| | | in. (mm) | |
| H-ZCOBG- 4 | 1/4 | 0.38 (9.65) | 0.44 (11.18) |
| H-ZCOBG- 8 | 1/2 | 0.60 (15.24) | 0.44 (11.18) |
| H-ZCOBG- 12 | 3/4 | 0.92 (23.37) | 0.50 (12.7) |
| H-ZCOBG- 16 | 1 | 1.19 (30.23) | 0.50 (12.7) |

BODIES

Socket weld Connector

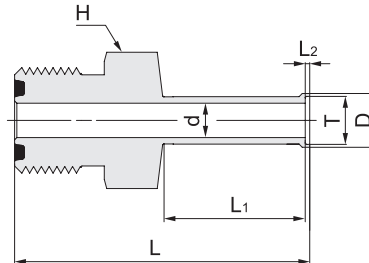
Adapts tubing to ZCO gland.



| Part Number | ZCO Size in. | T Tube O.D. | D | d | L | L ₁ | L ₂ | H Hex Flat | Working Pressure | |
|--------------|--------------|-------------|--------------|--------------|--------------|----------------|----------------|------------|------------------|-----|
| | | | in. (mm) | | | | | | psig | bar |
| H-ZCOSWC- 2 | 1/8 | 1/8" | 0.29 (7.37) | 0.09 (2.29) | 0.88 (22.35) | 0.10 (2.54) | 0.10 (2.54) | 5/8" | 12600 | 860 |
| H-ZCOSWC- 4 | 1/4 | 1/4" | 0.38 (9.65) | 0.18 (4.57) | 1.09 (27.69) | 0.28 (7.11) | 0.31 (7.87) | 5/8" | 6800 | 460 |
| H-ZCOSWC- 6 | 1/2 | 3/8" | 0.60 (15.24) | 0.28 (7.11) | 1.28 (32.51) | 0.31 (7.87) | 0.38 (9.65) | 15/16" | 8100 | 560 |
| H-ZCOSWC- 8 | 1/2 | 1/2" | 0.73 (18.50) | 0.40 (10.16) | 1.34 (34.04) | 0.38 (9.65) | 0.44 (11.18) | 15/16" | 3000 | 200 |
| H-ZCOSWC- 12 | 3/4 | 3/4" | 0.92 (23.37) | 0.62 (15.75) | 1.50 (38.10) | 0.44 (11.18) | 0.50 (12.7) | 1-5/16" | 3700 | 250 |
| H-ZCOSWC- 16 | 1 | 1" | 1.19 (30.23) | 0.87 (22.10) | 1.72 (43.69) | 0.62 (15.75) | 0.69 (17.53) | 1-5/8" | 3000 | 200 |

Automatic Tube weld Connector

Adapts tubing to ZCO gland.

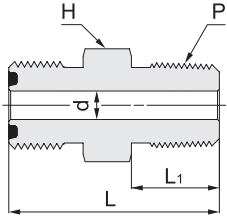


| Part Number | ZCO Size in. | T Tube O.D. | D | d | L | L ₁ | L ₂ | H Hex Flat | Nominal Wall Thickness | Working Pressure | |
|--------------|--------------|-------------|--------------|--------------|-------------|----------------|----------------|------------|------------------------|------------------|-----|
| | | | in. (mm) | | | | | | | psig | bar |
| H-ZCOTWC- 4A | 1/4 | 1/4" | 0.29 (7.37) | 0.18 (4.57) | 1.59(40.39) | 0.75(19.05) | 0.02(0.51) | 5/8" | 0.035" | 5100 | 350 |
| H-ZCOTWC- 6A | 1/2 | 3/8" | 0.41(10.41) | 0.31(7.87) | 1.74(44.20) | 0.75(19.05) | 0.03(0.76) | 15/16" | 0.035" | 3300 | 220 |
| H-ZCOTWC- 8A | 1/2 | 1/2" | 0.55(13.97) | 0.40(10.16) | 1.75(44.45) | 0.75(19.05) | 0.04(1.02) | 15/16" | 0.049" | 3500 | 240 |
| H-ZCOTWC-12A | 3/4 | 3/4" | 0.80(20.32) | 0.65(16.51) | 1.78(45.21) | 0.75(19.05) | 0.04(1.02) | 15/16" | 0.049" | 2200 | 150 |
| H-ZCOTWC-16A | 1 | 1" | 1.06(26.92) | 0.87(22.01) | 2.03(51.56) | 0.96(24.38) | 0.04(1.02) | 1-5/8" | 0.065" | 2200 | 150 |

Hy-Lok ZCO O-Ring Face Seal Fittings

Male Connector

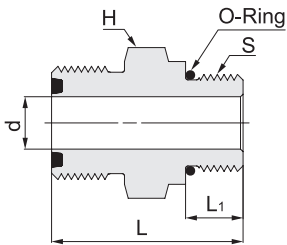
Converts female NPT thread to ZCO gland.



| Part Number | ZCO Size in. | P Male NPT Size | d | | L | | L ₁ | H Hex Flat | Working Pressure | |
|---------------|--------------|-----------------|-------------|-------------|-------------|---------|----------------|------------|------------------|-----|
| | | | in. (mm) | | in. (mm) | | | | psig | bar |
| H-ZCOMC 4- 2N | 1/4 | 1/8" | 0.18(4.57) | 1.16(29.46) | 0.38(9.65) | 5/8" | 10000 | 680 | | |
| H-ZCOMC 4- 4N | 1/4 | 1/4" | 0.18(4.57) | 1.34(34.04) | 0.56(14.22) | 5/8" | 13400 | 920 | | |
| H-ZCOMC 8- 6N | 1/2 | 3/8" | 0.38(9.65) | 1.46(37.08) | 0.56(14.22) | 15/16" | 7800 | 530 | | |
| H-ZCOMC 8- 8N | 1/2 | 1/2" | 0.40(10.16) | 1.65(41.91) | 0.75(19.05) | 15/16" | 10000 | 680 | | |
| H-ZCOMC12-12N | 3/4 | 3/4" | 0.62(15.75) | 1.75(44.45) | 0.75(19.05) | 1-5/16" | 7300 | 500 | | |
| H-ZCOMC16-16N | 1 | 1" | 0.87(22.10) | 1.97(50.04) | 0.94(23.88) | 1-5/8" | 5300 | 360 | | |

SAE / MS Connector

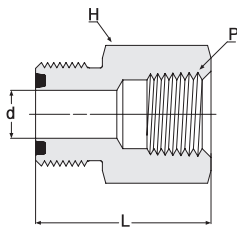
Converts SAE/MS thread boss to ZCO gland.



| Part Number | ZCO Size in. | S Thread Size | d | | L | | L ₁ | H Hex Flat | O-ring Uniform size Number | Working Pressure | |
|---------------|--------------|---------------|-------------|-------------|-------------|--------|----------------|------------|----------------------------|------------------|-----|
| | | | in. (mm) | | in. (mm) | | | | | psig | bar |
| H-ZCOSC 4- 2U | 1/4 | 7/16-20 | 0.18(4.57) | 1.24(31.50) | 0.36(9.14) | 11/16" | -904 | 4500 | 310 | | |
| H-ZCOSC 4- 6U | 1/4 | 9/16-18 | 0.18(4.57) | 1.17(29.72) | 0.39(9.91) | 11/16" | -906 | 4500 | 310 | | |
| H-ZCOSC 8- 4U | 1/2 | 7/16-20 | 0.18(4.57) | 1.36(34.54) | 0.36(9.14) | 15/16" | -904 | 4500 | 310 | | |
| H-ZCOSC 8- 6U | 1/2 | 9/16-18 | 0.30(7.60) | 1.39(35.31) | 0.39(9.91) | 15/16" | -906 | 4500 | 310 | | |
| H-ZCOSC 8- 8U | 1/2 | 3/4-16 | 0.40(10.16) | 1.47(37.34) | 0.44(11.18) | 1" | -908 | 4500 | 310 | | |
| H-ZCOSC12-12U | 3/4 | 1-1/16-12 | 0.62(15.75) | 1.73(43.94) | 0.59(14.99) | 1-3/8" | -912 | 3600 | 240 | | |
| H-ZCOSC16-16U | 1 | 1-5/16-12 | 0.85(21.60) | 1.79(45.47) | 0.59(14.99) | 1-5/8" | -916 | 2900 | 190 | | |

Female Connector

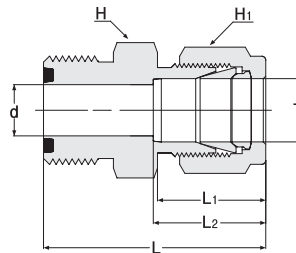
Converts male NPT thread to ZCO gland.



| Part Number | ZCO Size in. | P Female NPT Size | d | | L | | H Hex Flat | Working Pressure | |
|---------------|--------------|-------------------|-------------|-------------|-------------|---------|------------|------------------|-----|
| | | | in. (mm) | | in. (mm) | | | psig | bar |
| H-ZCOFC 4- 2N | 1/4 | 1/8" | 0.18(4.57) | 1.25(31.75) | 0.38(9.65) | 5/8" | 8400 | 570 | |
| H-ZCOFC 4- 4N | 1/4 | 1/4" | 0.18(4.57) | 1.39(35.31) | 0.56(14.22) | 3/4" | 6600 | 450 | |
| H-ZCOFC 8- 6N | 1/2 | 3/8" | 0.40(10.16) | 1.57(39.88) | 0.56(14.22) | 15/16" | 6600 | 450 | |
| H-ZCOFC 8- 8N | 1/2 | 1/2" | 0.40(10.16) | 1.77(44.96) | 0.75(19.05) | 1-1/16" | 4900 | 330 | |
| H-ZCOFC12-12N | 3/4 | 3/4" | 0.62(15.75) | 1.93(49.02) | 0.75(19.05) | 1-5/16" | 4600 | 310 | |
| H-ZCOFC16-16N | 1 | 1" | 0.87(22.10) | 2.02(51.31) | 0.94(23.88) | 1-5/8" | 4400 | 300 | |

Hy-Lok Tube Fitting Connector

Adapts tubing to ZCO gland.

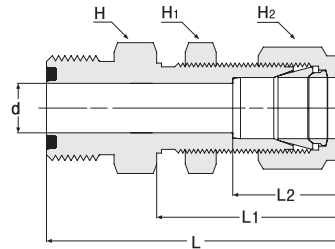


| Part Number | ZCO Size in. | T Tube O.D. | d | | L | | L ₁ | L ₂ | H Hex Flat | H ₁ Hex Flat | Working Pressure | |
|--------------|--------------|-------------|-------------|-------------|-------------|-------------|----------------|----------------|------------|-------------------------|------------------|-----|
| | | | in. (mm) | | in. (mm) | | | | | | psig | bar |
| H-ZCOCC 4- 2 | 1/4 | 1/8" | 0.09(2.29) | 1.38(35.05) | 0.60(15.24) | 0.51(12.95) | 5/8" | 7/16" | 10900 | 750 | | |
| H-ZCOCC 4- 4 | 1/4 | 1/4" | 0.18(4.57) | 1.47(37.34) | 0.70(17.78) | 0.60(15.24) | 5/8" | 9/16" | 10200 | 700 | | |
| H-ZCOCC 8- 6 | 1/2 | 3/8" | 0.28(7.11) | 1.65(41.91) | 0.76(19.30) | 0.66(16.76) | 15/16" | 11/16" | 6500 | 440 | | |
| H-ZCOCC 8- 8 | 1/2 | 1/2" | 0.40(10.16) | 1.78(45.21) | 0.87(22.10) | 0.90(22.86) | 15/16" | 7/8" | 6700 | 460 | | |
| H-ZCOCC12-12 | 3/4 | 3/4" | 0.62(15.75) | 1.86(47.24) | 0.87(22.10) | 0.96(22.38) | 1-5/16" | 1-1/8" | 5800 | 390 | | |
| H-ZCOCC16-16 | 1 | 1" | 0.87(22.10) | 2.06(52.32) | 1.04(26.42) | 1.23(31.24) | 1-5/8" | 1-1/2" | 4700 | 320 | | |

Hy-Lok ZCO O-Ring Face Seal Fittings

Hy-Lok Tube Fitting Bulkhead Connector

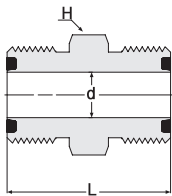
Adapts tubing to ZCO gland.



| Part Number | ZCO Size in. | T Tube O.D. | d | L | L ₁ | L ₂ | H Hex Flat | H ₁ Hex Flat | H ₂ Hex Flat | Panel Hole Size | Max. Panel Thickness | Working Pressure | |
|----------------|--------------|-------------|-------------|-------------|----------------|----------------|------------|-------------------------|-------------------------|-----------------|----------------------|------------------|------|
| | | | | | | | | | | | | in. (mm) | psig |
| H-ZCOCBHC 4- 4 | 1/4 | 1/4" | 0.18(4.57) | 2.10(53.34) | 1.32(33.53) | 0.60(15.24) | 5/8" | 5/8" | 9/16" | 29/64" | 0.40" | 10200 | 700 |
| H-ZCOCBHC 8- 6 | 1/2 | 3/8" | 0.28(7.11) | 2.34(59.44) | 1.45(36.83) | 0.66(16.76) | 15/16" | 3/4" | 11/16" | 37/64" | 0.44" | 6500 | 440 |
| H-ZCOCBHC 8- 8 | 1/2 | 1/2" | 0.40(10.16) | 2.55(64.77) | 1.65(41.91) | 0.90(22.86) | 15/16" | 15/16" | 7/8" | 49/64" | 0.50" | 6700 | 460 |
| H-ZCOCBHC12-12 | 3/4 | 3/4" | 0.62(15.75) | 2.86(72.50) | 1.87(47.50) | 0.96(24.38) | 1-5/16" | 1-3/16" | 1-1/8" | 1-1/64" | 0.66" | 5800 | 390 |
| H-ZCOCBHC16-16 | 1 | 1" | 0.87(22.10) | 3.29(83.57) | 2.26(57.40) | 1.23(31.24) | 1-5/8" | 1-5/8" | 1-1/2" | 1-21/64" | 0.75" | 4700 | 320 |

Union

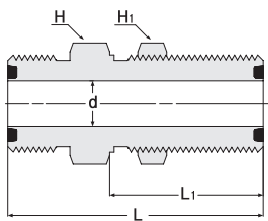
Connects ZCO glands.



| Part Number | ZCO Size in. | d | L | H Hex Flat | Working Pressure | |
|-------------|--------------|--------------|--------------|------------|------------------|-----|
| | | | | | psig | bar |
| H-ZCOUA-4 | 1/4 | 0.18 (4.57) | 1.25 (31.75) | 5/8" | 14300 | 980 |
| H-ZCOUA-8 | 1/2 | 0.40 (10.16) | 1.50 (38.10) | 15/16" | 11100 | 760 |

Bulkhead Union

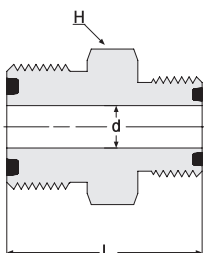
Connects ZCO glands.



| Part Number | ZCO Size in. | D | d | L | H Hex Flat | H ₁ Hex Flat | Panel Hole Size | Max. Panel Thickness | Working Pressure | |
|-------------|--------------|--------------|--------------|--------------|------------|-------------------------|-----------------|----------------------|------------------|------|
| | | | | | | | | | in. (mm) | psig |
| H-ZCOBHU-4 | 1/4 | 1.06 (26.92) | 0.18 (4.57) | 1.88 (47.75) | 3/4" | 3/4" | 37/64" | 0.36" | 14300 | 980 |
| H-ZCOBHU-8 | 1/2 | 1.19 (30.23) | 0.40 (10.16) | 2.09 (53.09) | 1-1/16" | 1-1/16" | 57/64" | 0.40" | 11100 | 760 |

Reducing Union

Connects ZCO glands.

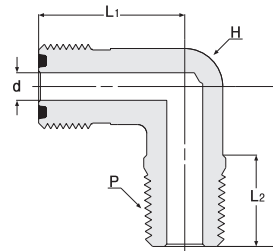


| Part Number | ZCO Size in. | ZCO Size in. | d | L | H Hex Flat | Working Pressure | |
|-------------|--------------|--------------|------------|-------------|------------|------------------|------|
| | | | | | | in. (mm) | psig |
| H-ZCOUR8-4 | 1/2 | 1/4 | 0.18(4.57) | 1.43(36.32) | 15/16" | 11100 | 760 |

Hy-Lok ZCO O-Ring Face Seal Fittings

Male Elbow

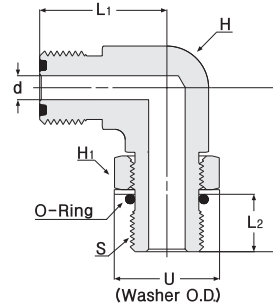
Converts female NPT thread to ZCO gland.



| Part Number | ZCO Size in. | P Male NPT Size | d | L | L ₁ | L ₂ | H Wrench Flat | Working Pressure | |
|---------------|--------------|-----------------|-------------|-------------|----------------|----------------|---------------|------------------|-----|
| | | | | | | | | psig | bar |
| H-ZCOLM 4- 2N | 1/4 | 1/8" | 0.18(4.57) | 0.87(22.10) | 0.96(24.38) | 0.38(9.65) | 1/2" | 10000 | 680 |
| H-ZCOLM 4- 4N | 1/4 | 1/4" | 0.18(4.57) | 1.05(26.67) | 0.96(24.38) | 0.56(14.22) | 1/2" | 8000 | 550 |
| H-ZCOLM 8- 6N | 1/2 | 3/8" | 0.38(9.65) | 1.26(32.00) | 1.26(32.00) | 0.56(14.22) | 13/16" | 7800 | 530 |
| H-ZCOLM 8- 8N | 1/2 | 1/2" | 0.40(10.16) | 1.45(36.83) | 1.26(32.00) | 0.75(19.05) | 13/16" | 7700 | 530 |
| H-ZCOLM12-12N | 3/4 | 3/4" | 0.62(15.75) | 1.67(42.42) | 1.48(37.59) | 0.75(19.05) | 1-1/4" | 7300 | 500 |
| H-ZCOLM16-16N | 1 | 1" | 0.87(22.10) | 1.94(49.28) | 1.56(39.62) | 0.94(23.88) | 1-11/16" | 5300 | 360 |

SAE/ME Adjustable Elbow

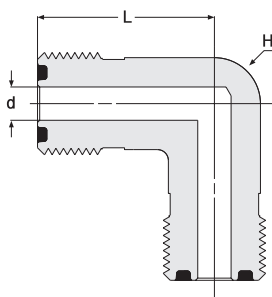
Converts SAE/ME straight thread boss to ZCO gland.



| Part Number | ZCO Size in. | S Straight Thread Size | d | L | L ₁ | L ₂ | H Wrench Flat | H ₁ Hex Flat | O-ring Uniform size Number | U | Working Pressure | |
|---------------|--------------|------------------------|--------------|--------------|----------------|----------------|---------------|-------------------------|----------------------------|-------|------------------|-----|
| | | | | | | | | | | | psig | bar |
| H-ZCOSL 4- 4U | 1/4 | 7/16-20 | 0.18 (4.57) | 1.19 (30.23) | 0.96 (24.38) | 0.39 (9.91) | 5/8" | 9/16" | -904 | 0.65" | 4500 | 310 |
| H-ZCOSL 8- 6U | 1/2 | 9/16-18 | 0.30 (7.62) | 1.54 (39.12) | 1.33 (33.78) | 0.44 (11.18) | 1-1/16" | 11/16" | -906 | 0.79" | 3600 | 240 |
| H-ZCOSL 8- 8U | 1/2 | 3/4-16 | 0.40 (10.16) | 1.65 (41.91) | 1.33 (33.78) | 0.50 (12.7) | 1-1/16" | 7/8" | -908 | 1.01" | 3600 | 240 |
| H-ZCOSL12-12U | 3/4 | 1-1/16-12 | 0.62 (15.75) | 2.13 (54.10) | 1.53 (38.86) | 0.66 (16.76) | 1-3/8" | 1-1/4" | -912 | 1.44" | 2900 | 190 |
| H-ZCOSL16-16U | 1 | 1-5/16-12 | 0.87 (22.10) | 2.31 (58.67) | 1.72 (43.69) | 0.66 (16.76) | 1-11/16" | 1-1/2" | -916 | 1.73" | 2300 | 150 |

Elbow

Connects ZCO glands.

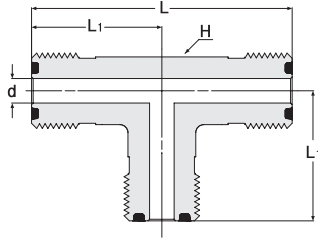


| Part Number | ZCO Size in. | d | L | H Wrench Flat | Working Pressure | |
|-------------|--------------|-------------|-------------|---------------|------------------|-----|
| | | | | | psig | bar |
| H-ZCOLA- 4 | 1/4 | 0.18(4.57) | 0.96(24.38) | 1/2" | 14300 | 980 |
| H-ZCOLA- 8 | 1/2 | 0.40(10.16) | 1.26(32.00) | 13/16" | 11100 | 760 |
| H-ZCOLA-12 | 3/4 | 0.62(15.75) | 1.48(37.59) | 1-1/4" | 10900 | 750 |
| H-ZCOLA-16 | 1 | 0.87(22.10) | 1.56(39.62) | 1-11/16" | 8800 | 600 |

Hy-Lok ZCO O-Ring Face Seal Fittings

Tee

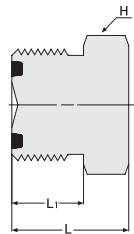
Connects ZCO glands.



| Part Number | ZCO Size in. | d | L | L ₁ | H Wrench Flat | Working Pressure | |
|--------------|--------------|--------------|--------------|----------------|---------------|------------------|-----|
| | | in. (mm) | | | | psig | bar |
| H-ZCOTA - 4 | 1/4 | 0.18 (4.57) | 1.92 (48.79) | 0.96 (24.38) | 1/2" | 14300 | 980 |
| H-ZCOTA - 8 | 1/2 | 0.40 (10.16) | 2.52 (64.00) | 1.26 (32.00) | 13/16" | 11100 | 760 |
| H-ZCOTA - 12 | 3/4 | 0.62 (15.75) | 2.96 (75.18) | 1.48 (37.59) | 1-1/4" | 10900 | 750 |
| H-ZCOTA - 16 | 1 | 0.87 (22.10) | 3.12 (79.25) | 1.56 (39.62) | 1-11/16" | 8800 | 600 |

Plugs

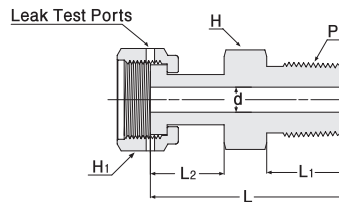
Seals a ZCO gland and female nut.



| Part Number | ZCO Size in. | L | L ₁ | H Hex Flat |
|-------------|--------------|-------------|----------------|------------|
| | | in. (mm) | | |
| H-ZCOP - 4 | 1/4 | 0.77(19.56) | 0.47(11.94) | 5/8" |
| H-ZCOP - 8 | 1/2 | 0.89(22.61) | 0.56(14.22) | 15/16" |
| H-ZCOP - 12 | 3/4 | 0.99(25.15) | 0.56(14.22) | 1-5/16" |
| H-ZCOP - 16 | 1 | 1.02(25.91) | 0.56(14.22) | 1-5/8" |

Swivel Male Connector

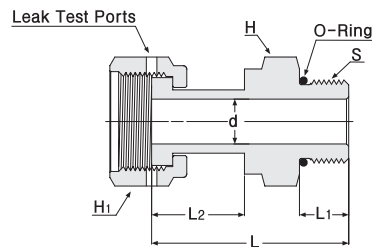
Converts female NPT thread to ZCO O-ring face seal.



| Part Number | ZCO Size in. | P Male NPT | d | L | L ₁ | L ₂ | H Hex Flat | H ₁ Hex Flat | Working Pressure | |
|----------------|--------------|------------|-------------|-------------|----------------|----------------|------------|-------------------------|------------------|-----|
| | | | in. (mm) | | | | | | psig | bar |
| H-ZCOSMC 4- 4N | 1/4 | 1/4" | 0.18(4.57) | 1.59(40.39) | 0.56(14.22) | 0.72(18.29) | 9/16" | 11/16" | 9800 | 670 |
| H-ZCOSMC 8- 6N | 1/2 | 3/8" | 0.40(10.16) | 1.67(42.42) | 0.56(14.22) | 0.78(19.81) | 11/16" | 1" | 5600 | 380 |
| H-ZCOSMC 8- 8N | 1/2 | 1/2" | 0.40(10.16) | 1.87(47.50) | 0.75(19.05) | 0.79(20.07) | 7/8" | 1" | 5600 | 380 |
| H-ZCOSMC12-12N | 3/4 | 3/4" | 0.62(15.75) | 2.03(51.56) | 0.75(19.05) | 0.94(23.88) | 1-1/16" | 1-1/2" | 3900 | 260 |
| H-ZCOSMC16-16N | 1 | 1" | 0.87(22.10) | 2.36(59.94) | 0.94(23.88) | 0.98(24.89) | 1-3/8" | 1-3/4" | 2900 | 190 |

Swivel SAE/MS Connector

Converts SAE/MS straight thread boss to ZCO O-ring face seal.

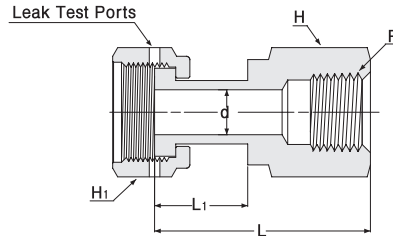


| Part Number | ZCO Size in. | S Straight Thread Size | d | L | L ₁ | L ₂ | H Hex Flat | H ₁ Hex Flat | O-ring Uniform size Number | Working Pressure | |
|----------------|--------------|------------------------|-------------|-------------|----------------|----------------|------------|-------------------------|----------------------------|------------------|-----|
| | | | in. (mm) | | | | | | | psig | bar |
| H-ZCOSSC 4- 4U | 1/4 | 7/16-20 | 0.18(4.57) | 1.54(39.12) | 0.36(9.14) | 0.77(19.56) | 9/16" | 11/16" | -904 | 4500 | 310 |
| H-ZCOSSC 8- 6U | 1/2 | 9/16-18 | 0.40(10.16) | 1.64(41.66) | 0.39(9.91) | 0.81(20.57) | 11/16" | 1" | -906 | 4500 | 310 |
| H-ZCOSSC 8- 8U | 1/2 | 3/4-16 | 0.40(10.16) | 1.71(43.43) | 0.44(11.18) | 0.81(20.57) | 7/8" | 1" | -908 | 4500 | 310 |
| H-ZCOSSC12-12U | 3/4 | 1-1/16-12 | 0.62(15.75) | 2.07(52.58) | 0.59(14.99) | 0.94(23.88) | 1-1/4" | 1-1/2" | -912 | 3600 | 240 |
| H-ZCOSSC16-16U | 1 | 1-5/16-12 | 0.87(22.10) | 2.17(55.12) | 0.59(14.99) | 0.98(24.89) | 1-1/2" | 1-3/4" | -916 | 2900 | 190 |

Hy-Lok ZCO O-Ring Face Seal Fittings

Swivel Female Connector

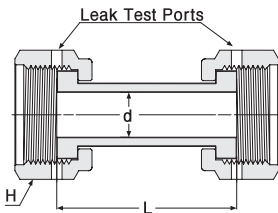
Converts male NPT thread to ZCO O-ring face seal.



| Part Number | ZCO Size in. | P Female NPT Size | d | L | L ₁ | H Hex Flat | H ₁ Hex Flat | Working Pressure | |
|----------------|--------------|-------------------|-------------|-------------|----------------|------------|-------------------------|------------------|-----|
| | | | | | | | | psig | bar |
| H-ZCOSFC 4- 4N | 1/4 | 1/4" | 0.18(4.57) | 1.57(39.88) | 0.72(18.29) | 3/4" | 1 1/16" | 6600 | 450 |
| H-ZCOSFC 8- 6N | 1/2 | 3/8" | 0.40(10.16) | 1.73(43.94) | 0.84(21.34) | 7/8" | 1" | 5300 | 360 |
| H-ZCOSFC 8- 6N | 1/2 | 1/2" | 0.40(10.16) | 1.96(49.78) | 0.82(20.83) | 1-1/16" | 1" | 4900 | 330 |
| H-ZCOSFC12-12N | 3/4 | 3/4" | 0.62(15.75) | 2.12(53.85) | 0.94(23.88) | 1-5/16" | 1-1/2" | 4000 | 270 |
| H-ZCOSFC16-16N | 1 | 1" | 0.87(22.10) | 2.29(58.17) | 0.98(24.89) | 1-5/8" | 1-3/4" | 3000 | 200 |

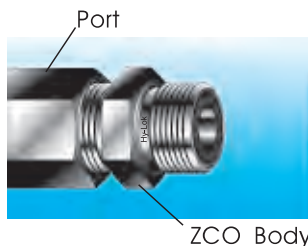
Swivel Union

Connects ZCO O-ring face seal.

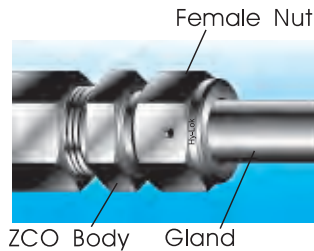


| Part Number | ZCO Size in. | d | L | H Wrench Flat | Working Pressure | |
|--------------|--------------|-------------|-------------|---------------|------------------|-----|
| | | | | | psig | bar |
| H-ZCOSUA - 4 | 1/4 | 0.18(4.57) | 1.42(36.07) | 1 1/16" | 10200 | 700 |
| H-ZCOSUA - 8 | 1/2 | 0.40(10.16) | 1.61(40.90) | 1" | 5800 | 390 |

Installation Instructions



Install ZCO body to existing port, tubing or equipment.



Assemble ZCO body with ZCO female nut and gland. And Tighten nut 1/8 turn with a wrench after finger tight to make sure metal to metal contact.

NOTE : When ZCO body or gland needs soldering, welding or brazing procedures, the O-ring should be removed to prevent possible damage

Ordering Information

Use **S316** for bodies and gland, nuts, **316L** for automatic tube weld fittings as a suffix to the basic part no. eg, H-ZCOSWG-8-S316, H-ZCOTWG-4-316L.

O-ring material selection

In case standard, No designator used.

Special O-Ring materials available on customer requests by indicating O-ring designator referred to Page 1. eg, H-ZCOTA-8-S316 (for standard O-ring), H-ZCOTA-8-BU-S316 (for Buna-N O-ring)

TYPE APPROVALS



American Bureau Shipping
CERTIFICATE NO.00-BK50288-X



Lloyd's Register
CERTIFICATE NO.01/10075



GERMANISCHER LLOYD
CERTIFICATE NO.57798 - 91 HH



DET NORSKE VERITAS
CERTIFICATE NO.P - 9100



Distributed by :

www.hy-lok.com